





# 【SPECIFICATION FOR APPROVAL】

P/N	ACDH105R Series	DATE	2016/10/6	REV	A
-----	-----------------	------	-----------	-----	---

**Wire Wound SMD Power Inductors–ACDH105R Series**  
**Operating temperature range: -40℃~+125℃ (Including self-heating)**

## 1.PART NUMBERING SYSTEM

ACDH	105R	XXX	—	X	S
<b>1</b>	<b>2</b>	<b>3</b>		<b>4</b>	<b>5</b>

1.SERIES NAME

2.DIMENSIONS

3.INDUCTANCE

4.TOLERANCE CODE: J:±5% K:±10% L:±15% M:±20% P:±25% N:±30%

5.INTERNAL IDENTIFICATION

## 2.FEATURES:

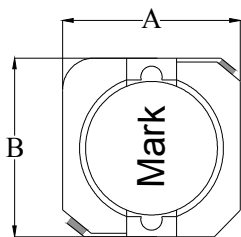
- Silver Plated Type,low cost designed
- High power, High saturation inductors
- Ideal inductors for DC-DC conversion
- Available on tape and reel for auto surfacemounting
- Takes up less PCB real estate and save more power

## 3.APPLICATIONS

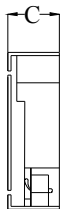
- Power supply for VTRs
- LCD televisions
- Notebook PCs
- Portable communication equipment
- DC/DC converters.etc

P/N	ACDH105R Series	DATE	2016/10/6	REV	A
-----	-----------------	------	-----------	-----	---

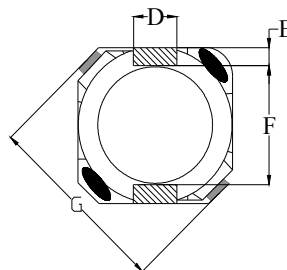
## 1. Appearance shape (unit : mm)



Top View



Front View



Bottom View

## 2. Appearance size(unit : mm) Tolerance:

A	B	C	D	E	F	G				
10.3	10.4	5.1	3.0	1.2	7.7	13.5				
MAX	MAX	MAX	REF	REF	REF	MAX				

## 3. Test instruments

L: TH2826A LCR METER (or equivalent)

IDC: CH2815 LCR METER+VR7220 DC SUPPLIER (or equivalent)

DCR: HK502BC MILLIOHMMETER (or equivalent)



# 【SPECIFICATION FOR APPROVAL】

P/N	ACDH105R Series	DATE	2016/10/6	REV	A
-----	-----------------	------	-----------	-----	---

## 4. CHARACTERISTICS

P/N	Inductance 电感	Test Frequency 测试频率 (Voltage 0.25V)	DC Resistance 直流电阻 (MAX)	Saturation Current 饱和电流	Temperature Rise current 温升电流	Marking 印字
Units	(uH)※1	HZ	mΩ	(A)※2	(A)※3	
Symbol	L	F	DCR	Isat	Irms	
ACDH105R-1R5N	1.5±30%	100KHz	10	8.30	10.50	1R5
ACDH105R-2R2N	2.2±30%	100KHz	12	7.50	9.25	2R2
ACDH105R-3R3N	3.3±30%	100KHz	14	6.50	7.80	3R3
ACDH105R-4R7N	4.7±30%	100KHz	16	6.10	6.40	4R7
ACDH105R-5R6N	5.6±30%	100KHz	18	5.40	5.80	5R6
ACDH105R-6R8N	6.8±30%	100KHz	20	5.20	5.40	6R8
ACDH105R-8R2N	8.2±30%	100KHz	26	4.85	4.85	8R2
ACDH105R-100M	10±20%	1KHz	26	4.45	4.45	100
ACDH105R-120M	12±20%	1KHz	33	4.00	4.00	120
ACDH105R-150M	15±20%	1KHz	41	3.60	3.60	150
ACDH105R-180M	18±20%	1KHz	46	3.20	3.20	180
ACDH105R-220M	22±20%	1KHz	61	2.95	2.95	220
ACDH105R-270M	27±20%	1KHz	69	2.70	2.70	270
ACDH105R-330M	33±20%	1KHz	84	2.40	2.40	330
ACDH105R-390M	39±20%	1KHz	106	2.30	2.30	390
ACDH105R-470M	47±20%	1KHz	130	2.00	2.00	470
ACDH105R-560M	56±20%	1KHz	149	1.90	1.90	560
ACDH105R-680M	68±20%	1KHz	201	1.65	1.65	680
ACDH105R-820M	82±20%	1KHz	227	1.50	1.50	820
ACDH105R-101M	100±20%	1KHz	253	1.35	1.35	101
ACDH105R-121M	120±20%	1KHz	303	1.28	1.28	121
ACDH105R-151M	150±20%	1KHz	370	1.12	1.12	151
ACDH105R-181M	180±20%	1KHz	419	1.04	1.04	181
ACDH105R-221M	220±20%	1KHz	500	0.94	0.94	221
ACDH105R-271M	270±20%	1KHz	672	0.84	0.84	271
ACDH105R-331M	330±20%	1KHz	812	0.75	0.75	331
ACDH105R-391M	390±20%	1KHz	953	0.70	0.70	391
ACDH105R-471M	470±20%	1KHz	1289	0.60	0.60	471
ACDH105R-561M	560±20%	1KHz	1430	0.54	0.54	561
ACDH105R-681M	680±20%	1KHz	1599	0.52	0.52	681
ACDH105R-821M	820±20%	1KHz	1768	0.50	0.50	821
ACDH105R-102M	1000±20%	1KHz	1989	0.48	0.48	102

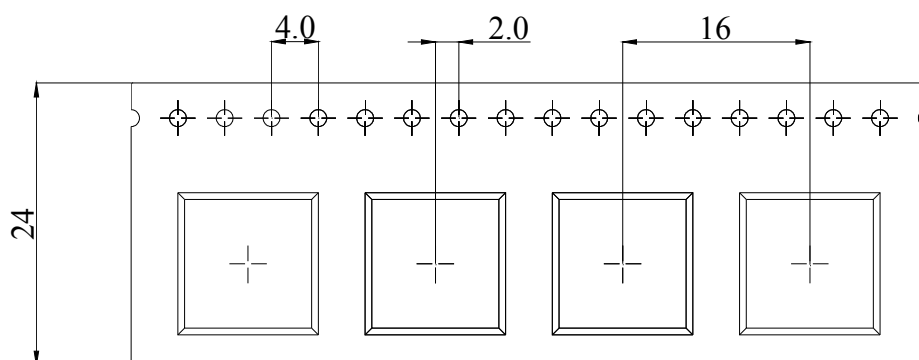
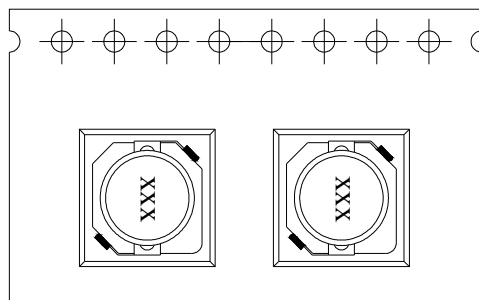
※1: All test data is referenced to 20° C ambient;

※2: Isat: DC current at which the inductance drops approximate 30% from its value without current

※3: Irms: DC current that causes the temperature rise(ΔT=40° C)from20° C ambient

P/N	ACDH105R Series	DATE	2016/10/6	REV	A
-----	-----------------	------	-----------	-----	---

## 1.DIMENSIONS FOR CARRIER TAPES:



## 2.PACKING(mm)

载带宽度 (W)	间距 (P)	卷 (PCS) 13inch	3卷/内箱 (PCS)	4个内箱/外箱 (PCS)
24mm	16mm	800	2400	9600

备注:

1. 包装袋规格: 375\*400mm (REF.) .
2. 内箱规格: 340\*70\*340mm (REF.) .
3. 外箱规格: 375\*360\*360mm (REF.) .