





# 【 SPECIFICATION FOR APPROVAL 】

SAN TUO P/N		DATE		REV	A
-------------	--	------	--	-----	---

**Wire Wound SMD Power Inductors—ANR Series**

Operating temperature range: -40°C~+125°C (Including self-heating)

## 1.PART NUMBERING SYSTEM

ANR	6045	B	— XXX	X	— S
<b>1</b>	<b>2</b>	<b>3</b>	<b>4</b>	<b>5</b>	<b>6</b>

1.SERIES NAME

2.DIMENSIONS

3.TYPE

4.INDUCTANCE

5.TOLERANCE CODE: J:±5% K:±10% L:±15% M:±20% P:±25% N:±30%

6.INTERNAL IDENTIFICATION

## 2.FEATURES:

- Magnetic-resin shielded coANRuction reduces buzz noise to ultra-low levels
- Metallization on ferrite core results in excellent shock resistance and damage-free durability
- Closed magnetic circuit design reduces leakage flux and Electro Magnetic Interference (EMI)
- 30% higher current rating than conventional inductors of equal size
- Takes up less PCB real estate and save more power

## 3.APPLICATIONS

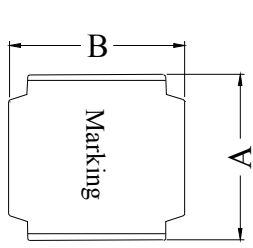
- LED Lighting
- Next-generation mobile devices with multifunction such as mobile TV and digital movie cameras
- Flat-screen TVs, blue-ray disc recorders, set top box
- Notebooks, desktop computers, servers, graphic cards cards
- Portable gaming devices, personal navigation systems, personal multimedia devices
- Automotive systems
- Telecomm base stations



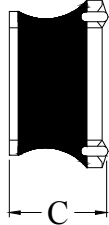
**【SPECIFICATION FOR APPROVAL】**

SAN TUO P/N		DATE		REV	A
-------------	--	------	--	-----	---

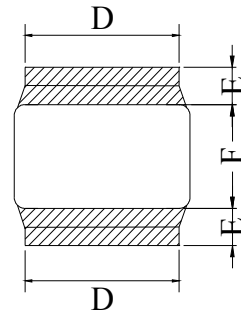
**1. Appearance shape (unit : mm)**



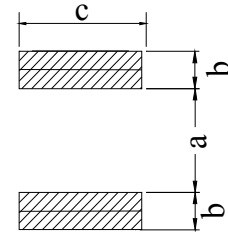
Top View



Front View



Bottom View



Recommended Land Pattern

**2. Appearance size(unit : mm) Tolerance:**

A	B	C	D	E	F	a	b	c		
6.0±0.3	6.0±0.3	4.5Max	4.9±0.3	1.55±0.3	2.9±0.3	2.8Typ.	1.7Typ.	5.7Typ.		

**3. Test instruments**

L: TH2826A LCR METER (or equivalent)

Isat: CH2815 LCR METER+VR7220 DC SUPPLIER (or equivalent)

DCR: HK502BC MILLIOHMMETER (or equivalent)



# 【SPECIFICATION FOR APPROVAL】

SAN TUO P/N		DATE		REV	A
-------------	--	------	--	-----	---

## 4. CHARACTERISTICS

P/N	Inductance 电感 @100KHz,1V	DC Resistance 直流电阻 (±30%)	Saturation Current 饱和电流	Heat Rating Current 温升电流	Marking 印字
Units	uH	Ω	A	A	
Symbol	L	DCR	Isat	Irms	
ANR6045-R82N-S	0.82±30%	0.008	10.40	5.90	R82
ANR6045-1R0N-S	1.0±30%	0.011	9.85	5.14	1R0
ANR6045-1R2N-S	1.2±30%	0.010	8.35	5.40	1R2
ANR6045-1R5N-S	1.5±30%	0.012	8.80	4.95	1R5
ANR6045-1R8N-S	1.8±30%	0.012	7.60	4.95	1R8
ANR6045-2R2N-S	2.2±30%	0.014	6.75	4.60	2R2
ANR6045-2R3N-S	2.3±30%	0.014	6.00	3.50	2R3
ANR6045-2R7N-S	2.7±30%	0.015	5.75	4.30	2R7
ANR6045-3R0N-S	3.0±30%	0.020	5.60	3.80	3R0
ANR6045-3R3N-S	3.3±30%	0.021	5.90	3.70	3R3
ANR6045-3R6N-S	3.6±30%	0.021	5.25	3.70	3R6
ANR6045-4R3M-S	4.3±20%	0.023	4.45	3.50	4R3
ANR6045-4R7M-S	4.7±20%	0.026	4.97	3.30	4R7
ANR6045-5R1M-S	5.1±20%	0.026	4.40	3.30	5R1
ANR6045-5R6M-S	5.6±20%	0.029	4.15	3.15	5R6
ANR6045-6R2M-S	6.2±20%	0.031	4.43	3.00	6R2
ANR6045-6R8M-S	6.8±20%	0.031	3.90	3.00	6R8
ANR6045-7R5M-S	7.5±20%	0.034	3.50	2.90	7R5
ANR6045-8R2M-S	8.2±20%	0.043	3.90	2.60	8R2
ANR6045-9R1M-S	9.1±20%	0.043	3.35	2.60	9R1
ANR6045-100M-S	10±20%	0.048	3.20	2.45	100
ANR6045-120M-S	12±20%	0.058	2.80	2.20	120
ANR6045-150M-S	15±20%	0.068	2.50	2.05	150
ANR6045-180M-S	18±20%	0.081	2.20	1.85	180
ANR6045-220M-S	22±20%	0.089	2.05	1.80	220
ANR6045-270M-S	27±20%	0.102	1.90	1.65	270
ANR6045-300M-S	30±20%	0.132	1.70	1.50	300
ANR6045-330M-S	33±20%	0.137	1.65	1.45	330
ANR6045-360M-S	36±20%	0.173	1.62	1.40	360
ANR6045-390M-S	39±20%	0.180	1.50	1.25	390
ANR6045-430M-S	43±20%	0.200	1.63	1.20	430
ANR6045-470M-S	47±20%	0.200	1.40	1.20	470



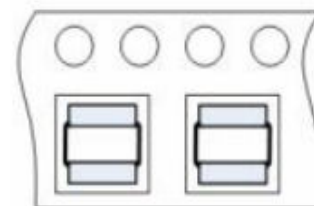
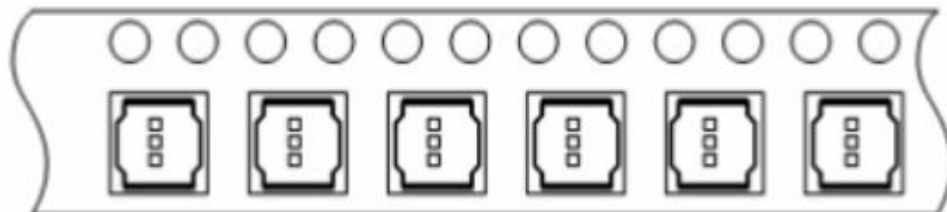
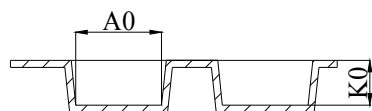
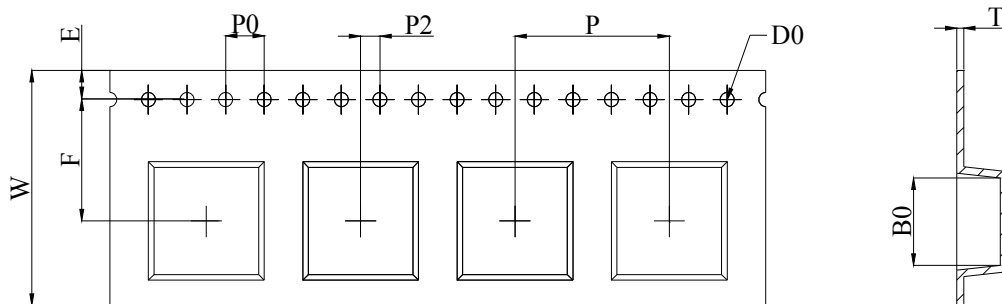


# 【SPECIFICATION FOR APPROVAL】

SAN TUO P/N		DATE		REV	A
-------------	--	------	--	-----	---

## 1.DIMENSIONS FOR CARRIER TAPES:

ITEM	W	A0	B0	K0	K1	P	F	E	D0	D1	P0	P2	T
DIM	16.00	6.3	6.3	4.7	0.00	8.00	7.50	1.75	1.50	0.00	4.00	2.00	0.40
	+0.3	+0.1	+0.1	+0.1	+0.0	+0.1	+0.1	+0.1	+0.1	+0.0	+0.1	+0.1	+0.05
	-0.3	-0.1	-0.1	-0.1	-0.0	-0.1	-0.1	-0.1	-0.0	-0.0	-0.1	-0.1	-0.05



## 2.PACKING(mm)

载带宽度 (W)	间距 (P)	卷(PCS) 13inch	3卷/2袋 (PCS)	2袋/内箱 (PCS)	5内箱/外箱 (PCS)
16mm	8mm	1500	4500	4500	22500

备注:

- 1.包装袋规格: 375\*400mm (REF.) .
- 2.内箱规格: 340\*70\*340mm (REF.) .
- 3.外箱规格: 375\*360\*360mm (REF.) .