

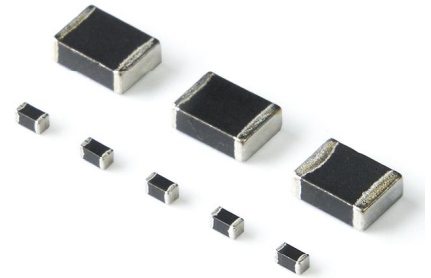
SPECIFICATION OF FBAQ High Current Automotive SERIES

AEC-Q200



APPLICATIONS

1. Effective EMI suppression component
2. Closed magnetic circuit to avoid crosstalk.
3. Shapes and dimensions follow E.I.A. spec.
4. Excellent solder ability and heat resistance.
5. Reliability test meet AEC-Q200.
6. 100% Lead(Pb) & Halogen-Free and RoHS compliant.
7. Low DC resistance structure to reduce power consumption.



ORDERING CODE

FBAQ-11-160808-121 A20 T
 (1) (2) (3) (4) (5) (6)

(1) PRODUCT TYPE CODE

FBAQ : Ferrite Bead Multilayer Automotive

□: RoHS Code

(2) DESIGN CODE

Type : 11

(3) SIZE CODE

See Following Table

(4) IMPEDANCE VALUE CODE

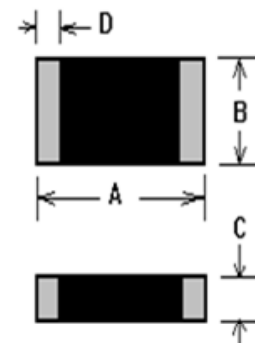
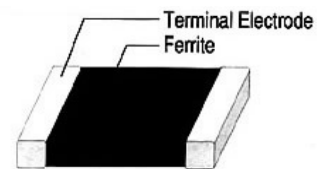
Example : 121=120Ω , 280=28Ω

(5) A□□ MEANS HIGH CURRENT RATING

Example : A10 means 1000mA

A08 means 800mA

(6) TAPING



SHAPE & DIMENSIONS

UNIT:mm (inch)

SIZE CODE	A	B	C	D
FBAQ-11-100505 (0402)	1.00±0.10 (0.040±0.004)	0.50±0.10 (0.020±0.004)	0.50±0.10 (0.020±0.004)	0.25±0.10 (0.010±0.004)
FBAQ-11-160808 (0603)	1.60±0.20 (0.063±0.008)	0.80±0.20 (0.031±0.008)	0.80±0.20 (0.031±0.008)	0.30±0.20 (0.012±0.008)
FBAQ-11-201209 (0805)	2.00±0.20 (0.079±0.008)	1.20±0.20 (0.047±0.008)	0.90±0.20 (0.035±0.008)	0.50±0.30 (0.020±0.012)
FBAQ-11-321611 (1206)	3.20±0.20 (0.126±0.008)	1.60±0.20 (0.063±0.008)	1.10±0.20 (0.043±0.008)	0.50±0.30 (0.020±0.012)
FBAQ-11-453215 (1812)	4.50±0.20 (0.177±0.008)	3.20±0.20 (0.126±0.008)	1.50±0.20 (0.059±0.008)	0.50±0.30 (0.020±0.012)

※All the data listed in this catalogue are for reference only, King Core reserves the right to alter or revise the specifications without prior notification.

MULTILAYER CHIP BEADS → FBAQ : High Current Standard Type

ELECTRICAL CHARACTERISTICS

ORDERING CODE	Impedance (Ω)	Test Frequency (MHz)	DC Resistance (Ω)max	IDC (mA)max
FBAQ-11-100505-100A10T	10±25%	100	0.200	1000
FBAQ-11-100505-300A10T	30±25%	100	0.200	1000
FBAQ-11-100505-600A10T	60±25%	100	0.200	1000
FBAQ-11-100505-121A10T	120±25%	100	0.200	1000
FBAQ-11-100505-221A20T	220±25%	100	0.200	1000
FBAQ-11-160808-220A60T	22±25%	100	0.010	6000
FBAQ-11-160808-121A30T	120±25%	100	0.040	3000
FBAQ-11-160808-331A20T	330±25%	100	0.100	2000
FBAQ-11-160808-601A10T	600±25%	100	0.200	1000
FBAQ-11-201209-300A60T	30±25%	100	0.015	6000
FBAQ-11-201209-600A30T	60±25%	100	0.040	3000
FBAQ-11-201209-121A40T	120±25%	100	0.035	4000
FBAQ-11-201209-221A20T	220±25%	100	0.100	2000
FBAQ-11-201209-301A30T	300±25%	100	0.040	3000
FBAQ-11-201209-601A10T	600±25%	100	0.200	1000
FBAQ-11-201209-601A20T	600±25%	100	0.100	2000
FBAQ-11-321611-300A60T	30±25%	100	0.010	6000
FBAQ-11-321611-800A40T	80±25%	100	0.035	4000
FBAQ-11-321611-121A30T	120±25%	100	0.040	3000
FBAQ-11-321611-121A60T	120±25%	100	0.010	6000
FBAQ-11-321611-501A30T	500±25%	100	0.040	3000
FBAQ-11-321611-601A30T	600±25%	100	0.040	3000
FBAQ-11-321611-102A10T	1000±25%	100	0.200	1000
FBAQ-11-453215-800A90T	80±25%	100	0.010	9000
FBAQ-11-453215-121A60T	120±25%	100	0.010	6000

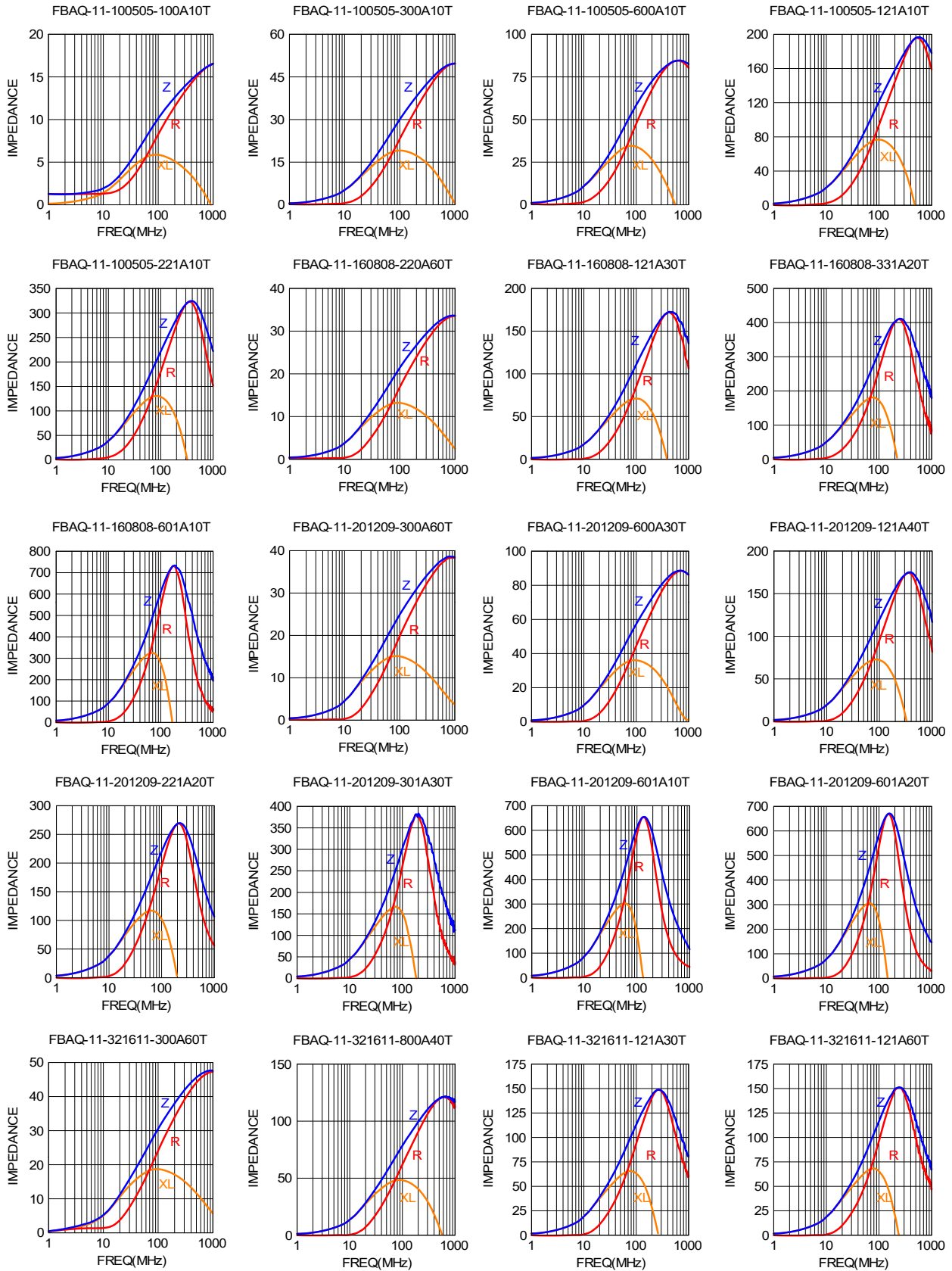
IDC:Based on Temperature increase 40°C

Operating Temperature Range:-55°C to +125°C (including self-heating.)

※All the data listed in this catalogue are for reference only, King Core reserves the right to alter or revise the specifications without prior notification.

MULTILAYER CHIP BEADS → FBAQ : High Current Standard Type

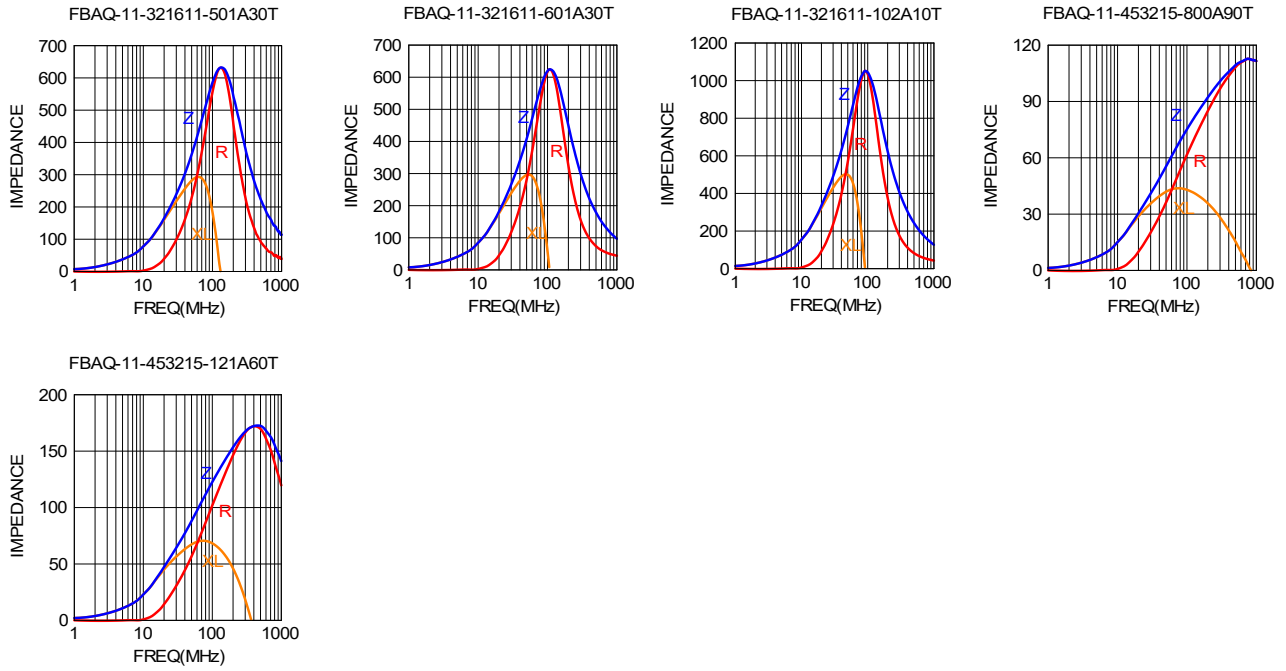
ELECTRICAL CHARACTERISTICS



※All the data listed in this catalogue are for reference only, King Core reserves the right to alter or revise the specifications without prior notification.

MULTILAYER CHIP BEADS → FBAQ : High Current Standard Type

ELECTRICAL CHARACTERISTICS



IDC: Based on Temperature increase 40°C

Operating Temperature Range: -55°C to +125°C (including self-heating.)

※All the data listed in this catalogue are for reference only, King Core reserves the right to alter or revise the specifications without prior notification.